



AFRICAN  
CANADIAN  
CONTINUING  
EDUCATION  
SOCIETY



# Annual Report



# TABLE OF CONTENTS

Our Vision.....	2
President's Message.....	3
ACCES Organizational Chart.....	4
ACCES Staff.....	5
Transparency & Accountability.....	6
Sustainability.....	7
Student Club Activities.....	8
Scholarships.....	9
Financial Overview.....	11
Financial Statement.....	12
Where Your Donations Go.....	13
ACCES Foundation.....	14

## 2020 Board of Directors:

Khaleel Amarshi  
Mariana Barbosa  
Sharon Cohen  
Trevor Lee  
Maureen MacDonald  
Julie Mangat  
Clara Radicetti  
Leigh Sauder  
Beth Scott  
Tobin Postma  
Moses Akali (Kenya)



## OUR VISION

**TO HELP KENYANS  
ALLEVIATE POVERTY  
THROUGH EDUCATION.**



## PRESIDENT'S MESSAGE

COVID-19 continues to have an uneven impact on countries and populations across the globe and we have all had to adapt to new ways of living and working. We have also had to battle never-ending waves of fear and uncertainty. How do we overcome all of this, how do we begin to rebuild and recover, together? There is no panacea to this; however, I strongly believe that education is the keystone to bridging an inclusive recovery.

In Kenya, despite the lockdowns and curfews that were in place, 176 ACCES sponsored students completed their formal education in 2020 – ready to be an active participant in the country's recovery. A further 100 students, through the support of donors such as yourselves, learned that they would be able to pursue their educational dreams thanks to an ACCES scholarship.

I am incredibly proud and grateful to our staff in Kenya and our Kenyan Advisory Committee who made all of this happen despite so much uncertainty.

Here in Canada, we made the decision to part ways with our longstanding Executive Director, Dale Albertson. Dale played a pivotal role in the success and impact of ACCES and we thank him very much for the energy and dedication he brought to the role.

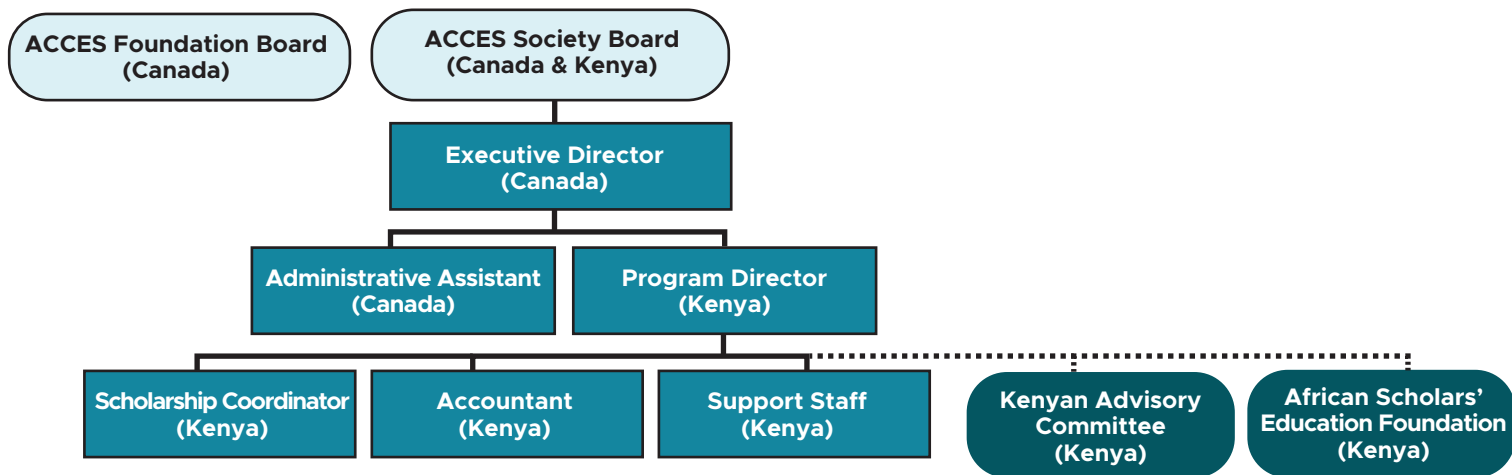
Consequently, ACCES has a new ED, Kevin Fadum, to help lead us closer and closer to our dream of Kenyanization. A dream that was championed by ACCES co-founder George Scott and long time ACCES Board member Eileen Malova, both of whom sadly passed away in 2020 - their legacies continue to reverberate through everything we do and they are deeply missed by all. This dream requires partnership, patience and humility and it is a journey that is made possible by the continued support of our donors and our partners in Canada and in Kenya – we could not do it without you, thank you.



*Tobin Postma, President - ACCES Board*

# ACCES ORGANIZATIONAL CHART\*

ACCES strives to maintain efficient, transparent processes so that we can maximize resources to achieve our mission of alleviating poverty through education. Our streamlined infrastructure in Canada made up of volunteers and part time staff supports increasing levels of responsibility in Kenya as the alumni base continues to grow and partner groups become more established. ACCES has a long-term vision of continuing to make an impact while gradually transferring responsibility to Kenyans to achieve greater levels of Kenyanization.



*\*organizational chart is in draft form*

# ACCES STAFF

## ACCES STAFF - CANADA

Canadian staff include Kevin Fadum, a part time Executive Director and Mary Lou Cadeau, a part time Administrative Assistant.

## ACCES STAFF - KENYA

Kenyan staff include Anthony Mutevane, a full time Program Director, Oscar Madahana, a full time accountant and Jancered Tibers, a full time Scholarship Coordinator. ACCES also employs a variety of support staff including security guards.



# TRANSPARENCY AND ACCOUNTABILITY

## KENYA ADVISORY COMMITTEE (KAC)

Made up of local business leaders and ACCES scholarship graduates, including an educator, university professor, and local business owners, the KAC ensures effective and efficient Kenyan operations by:

- advising the board of directors on Kenyan issues
- recommending staffing levels and salaries
- conducting staff performance evaluations
- monitoring program progress in the communities
- interviewing scholarship applicants
- providing advice and financial accountability

### 2020 KAC Members:

*Rajinder (Pape) Sembi (Chair)*

*Dr. Moses Akali (Vice-Chair)*

*Lucky Ngoya (Secretary)*

*Gerishom Wafula*

*Anthony Mutevane (ACCES Staff)*

# SUSTAINABILITY

## **ACCES Alumni Association (AAA) = African Scholars Education Foundation (ASEF)**

The Alumni Association took significant steps towards greater levels of Kenyanization becoming legally recognized as a registered nongovernmental organization under the name of the African Scholars' Education Foundation (ASEF) in May 2020.

ACCES Alumni Association (AAA) has evolved into the formalized structure of ASEF. ASEF works with university contacts in each university to provide mentoring services, post graduation job searches (networking) and financial assistance to ACCES students. All graduates become members of ASEF through their status as scholarship recipients.

ASEF hopes to enhance their subscription service to collect financial contributions from ASEF members to support student scholarships through ACCES. With over 3,000 ACCES graduates working in various positions across Kenya and other parts of the world, ASEF plans to build and maintain strong connections with alumni.

ASEF has an Executive Team which is deemed to be an interim transitional office pending ratification or changes at a full AGM sometime later this year.

### **2020 ASEF Executive Members:**

*David Lusaa (Chair)*  
*Dr. Moses Akali (Vice-Chair)*  
*Anthony Mutevane (Secretary/ACCES Staff)*  
*Oscar Madahana (ACCES Staff)*  
*Priscilla Were*



# STUDENT CLUB ACTIVITIES

## AAA Student Clubs

COVID – 19 restrictions had a big impact on day to day life in Kenya including student club activities. In accordance with Ministry of Health guidelines the following activities took place:

- COVID-19 sensitization campaigns
- Tree planting activities
- Orphanage visits
- Town cleanups
- Mini – de-jigging campaigns
- Mentor to mentee events.



# SCHOLARSHIPS

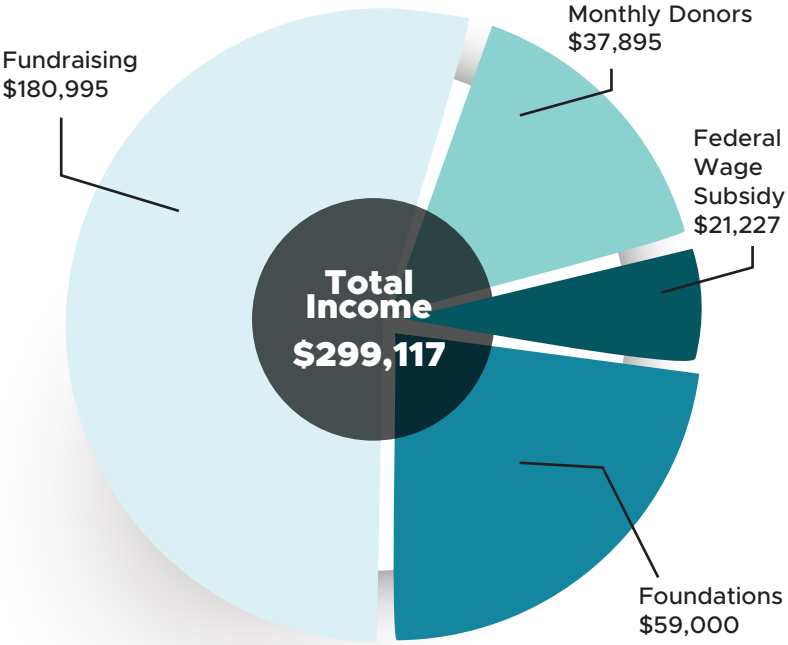
## EDUCATION 2020

- 432 applications were received for post-secondary scholarships
  - Applicants were not interviewed due to COVID restrictions
  - 176 applicants shortlisted for home verification
  - 100 applicants ultimately awarded scholarships (63 university, 30 in middle level colleges, and 7 in TIVET)
  - At the beginning of 2020 there were 231 (including 32 disabled) active beneficiaries in colleges and universities
  - 176 ACCES sponsored students graduated in 2020 with degrees and diplomas from various universities and colleges
  - 10,314 students and teachers benefited from mentorship training and activities that were conducted in 10 high schools and communities in Western Kenya
-

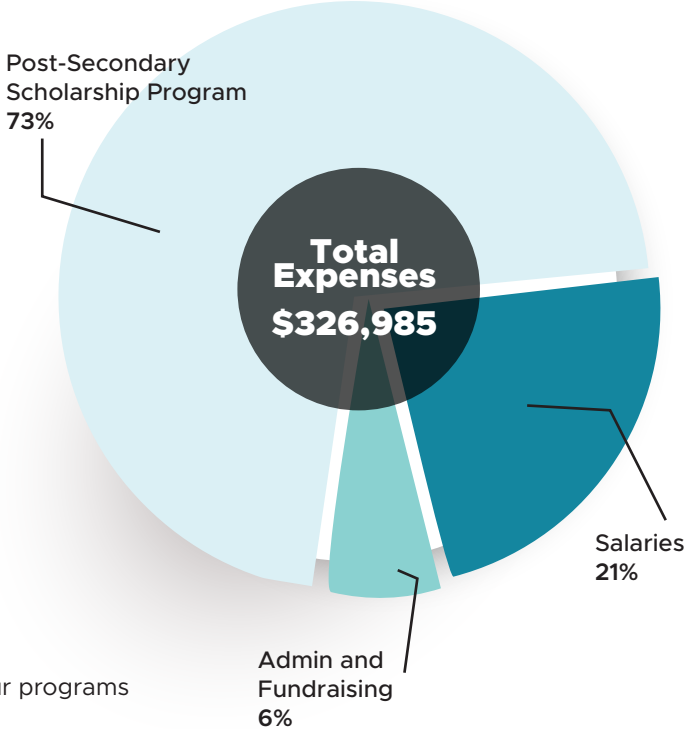


# FINANCIAL OVERVIEW

## Income Sources



## Program Cost Allocation



- Overhead is required to achieve our mission
- Administration and Fundraising are essential to support our programs
- All costs are allocated to our programs

# FINANCIAL STATEMENT

Hay & Watson Chartered Accountants (Audited statements can be viewed on our website and are available by request.)

Statement of Operations and Changes in Operating Surplus: Year Ended December 31, 2020

<b>EXPENSES</b>	<b>2020</b>	<b>2019</b>	<b>REVENUE</b>	<b>2020</b>	<b>2019</b>
Funds to Kenya	198,625	194,666	Donations & Fundraising	277,890	295,306
<b>Project Kenya</b>			Interest	39	53
Monitoring & Evaluation	--	--	Government Assistance*	31,227	--
Wages	58,801	39,455	<b>TOTAL:</b>	<b>309,156</b>	<b>295,359</b>
<b>TOTAL:</b>	<b>257,426</b>	<b>234,121</b>	<b>EXPENSES:</b>	<b>326,985</b>	<b>312,449</b>
<b>Project ACCES</b>			<b>NET INCOME:</b>	<b>(17,829)</b>	<b>(17,090)</b>
Administration	12,509	21,430	Operating Surplus	108,243	120,333
Amoritization	362	453	<small>(beginning of year)</small>		
Audit Fees	6,160	6,160	Operating Surplus	85,414	103,243
Fundraising	527	--	<small>(end of year)</small>		
Wages	50,001	50,285			
<b>TOTAL:</b>	<b>69,559</b>	<b>74,455</b>			
<b>Grand Total:</b>	<b>326,985</b>	<b>312,449</b>			

**\*Notes:**

- The Society received \$21,227 through the Government of Canada's Emergency Wage Subsidy ("CEWS") program which supports payroll expenses for eligible employers during the Pandemic.

# WHERE YOUR DONATIONS GO

ACCES understands how important it is for donors to see where their donations go, and what they actually accomplish. It's equally important for donors to understand how vital the core program costs of overhead are to the success and efficiency of the organization, and especially for the programs being implemented. It's the overhead that actually provides the ability to achieve the mission of ACCES.

These costs can vary from program to program depending on the complexity and type of program it is. Some programs are inherently more administration based than others.

In reality, all overhead is a core cost of delivering a program, which is why the circular graph on the preceding page shows the percentage of the whole cost pie divided up by the share of those costs the program actually uses, which is the true cost of delivering that program, including the overhead.

The table to the right shows each major cost centre and its individual percentage of the total costs for 2020.

	\$CDN	% of Total
<b>Kenya Cost Centre</b>		
Kenya Admin & Oversight	\$58,801	23%
Essential Travel	\$2,878	1%
Audit/legal fees	\$2,567	1%
Salaries	\$39,013	15%
Scholarship Program	\$149,608	58%
Mentorship Activities	\$982	0%
AAA Student Clubs Outreach	\$3,577	1%
<b>Total Kenyan Costs</b>	<b>\$257,426</b>	<b>79%</b>
<b>Canada Cost Centre</b>		
Fundraising	\$527	1%
Administration	\$62,510	90%
Audit	\$6,160	9%
Equipment	\$362	1%
<b>Total Canadian Costs</b>	<b>\$69,559</b>	<b>21%</b>
<b>Grand Total</b>	<b>\$326,985</b>	<b>100%</b>



# ACCES FOUNDATION

Yes! I am interested in finding out how to make a planned gift. Please send me the following information:



- ☐ **Gifts in my Will** - reduce taxes and increase inheritances to loved ones
- ☐ **Gifts of Publically Traded Securities & Mutual Funds** - eliminate capital gains tax
- ☐ **Gifts of Registered Assets** - opportunity for tax savings
- ☐ **Gifts of Life Insurance** - leverage small premium payments into a large gift
- ☐ **Gifts of Annuities** - reduce taxes and increase income
- ☐ **Charitable Remainder Trusts** - reduce taxes now
- ☐ **Major Gifts** - a gift of \$1,000 or more today    ☐ *Cheque enclosed*    ☐ *Credit Card*
- ☐ VISA    ☐ Mastercard    Card# \_\_\_\_\_ Exp. \_\_\_\_\_  
Name on card: \_\_\_\_\_  
Address: \_\_\_\_\_  
Phone: \_\_\_\_\_ Email: \_\_\_\_\_

For future planning:

- ☐ **Yes**, I intend to remember ACCES in my Will
- ☐ **Yes**, I have already included ACCES in my Will    ☐ I do not wish to be recognized
- ☐ **Yes**, I am considering a gift, please contact me

The ACCES Foundation was established in 1997 to ensure long-term options for donors like you who wish to leave a legacy.



To donate securely online, go to [www.acceskenya.org](http://www.acceskenya.org)  
To donate by phone, call the ACCES office at **604.688.4880**



## AFRICAN CANADIAN CONTINUING EDUCATION SOCIETY

P.O. Box 44986 RPO Ocean Park, Surrey, BC V4A 9L1

*Charitable Registration #13983 1770 RR0001*

[www.acceskenya.org](http://www.acceskenya.org)

[info@acceskenya.org](mailto:info@acceskenya.org)

604-688-4880

2020